



## CSK

### Screw cable lug for Cu and Al

longitudinally sealed, with shear head bolts, for low and medium voltage

Screw cable lug for RM/SM/RE/SE aluminium and copper conductors, suitable for indoor and outdoor terminations.

#### Material

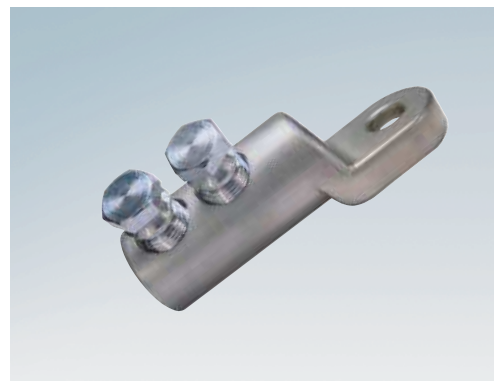
- Aluminium tin-plated

#### Application/Suitability

- For connecting conductors class 1 and class 2 in compliance with DIN-EN / IEC 60228

#### Test standards

- IEC 61238-1

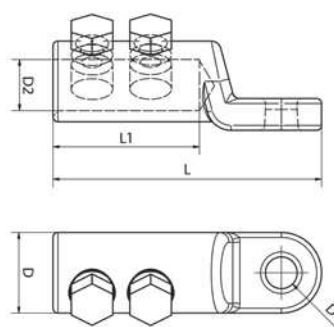


#### Scope of delivery

Screw cable lug, assembly instructions

Note: Cellpack counter-holder recommended for installation (see Accessories).

#### Dimensions



L = Length

L1 = Centric bore hole

D = Outer diameter

D1 = Plate bore diameter

D2 = Bore hole diameter

Type		L mm	L1 mm	D mm	D1 mm	D2 mm	Number of bolts	Art.-No.
CSK	6-50	65	30	22	13	9.4	1	313461
	16-95	65	30	22	13	12.5	1	291122
	50-150	80	35	28	13	16	1	290812
	95-240	110	60	33	13	20	2	289968
	95-240 DM17	110	60	33	17	20	2	289984
	240-400*	135	75	40	17	26	2	291178

\*CSK 240-400: RM/RE cross section from 240 to 400 mm<sup>2</sup>, SM/SE cross section from 240 to 300 mm<sup>2</sup>