



CorePro LEDtube EM/Mains T8

CorePro LEDtube 1200mm 16W840 C G

The CorePro LEDtube is an affordable LED solution suitable for replacing T8 fluorescent lamps. The product provides a natural lighting effect for use in general lighting applications, as well as instant energy savings – an environmentally friendly solution.

Product data

General Information	
Cap-Base	G13 [Medium Bi-Pin Fluorescent]
Main Application	Industrial
Nominal Lifetime (Nom)	30000 h
Switching Cycle	200000X
B50L70	30000 h
Light Technical	
Color Code	840 [CCT of 4000K]
Beam Angle (Nom)	240 °
Luminous Flux (Nom)	1600 lm
Luminous Flux (Rated) (Nom)	1600 lm
Rated Beam Angle	240 °
Correlated Color Temperature (Nom)	4000 K
Color Consistency	<6
Color Rendering Index (Nom)	80
LLMF At End Of Nominal Lifetime (Nom)	70 %
Operating and Electrical	
Input Frequency	50 to 60 Hz

Power (Rated) (Nom)	16 W
Lamp Current (Nom)	74 mA
Starting Time (Nom)	0.5 s
Warm Up Time To 60% Light (Nom)	instant full light s
Power Factor (Nom)	0.9
Voltage (Nom)	220-240 V
Temperature	
T-Ambient (Max)	45 °C
T-Ambient (Min)	-20 °C
T-Storage (Max)	65 °C
T-Storage (Min)	-40 °C
T-Case Maximum (Nom)	56 °C
Controls and Dimming	
Dimmable	No
Mechanical and Housing	
Product Length	1200 mm

CorePro LEDtube EM/Mains T8

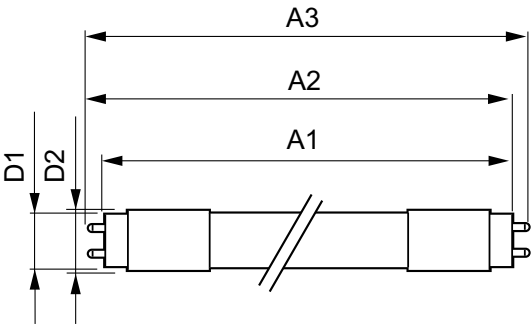
Approval and Application	
Energy Saving Product	Yes
Suitable For Accent Lighting	No
Energy Efficiency Label (EEL)	A+
Approval Marks	CE marking RoHS compliance KEMA Keur certificate
Energy Consumption kWh/1000 h	16 kWh
Product Data	
Full product code	871869649281900

Order product name	CorePro LEDtube 1200mm 16W840 C G
EAN/UPC - Product	8718696492819
Order code	929001173002
Numerator - Quantity Per Pack	1
Numerator - Packs per outer box	10
Material Nr. (12NC)	929001173002
Net Weight (Piece)	0.215 kg

Warnings and Safety

- NOTES: The overall energy efficiency and light distribution of any installation that uses these lamps are determined by the design of the installation.

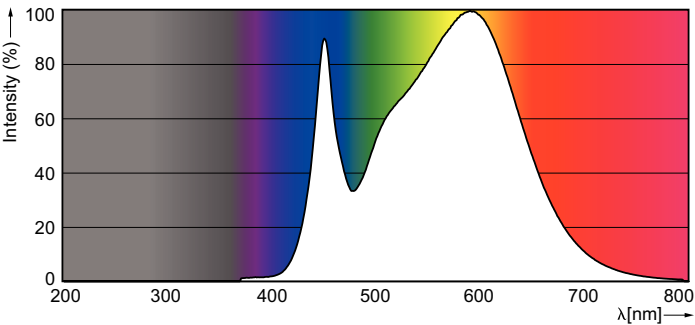
Dimensional drawing



LEDtube 1200mm 16W/840 C G

Product	D1	D2	A1	A2	A3
CorePro LEDtube 1200mm 16W840 C G	25.68 mm	28 mm	1198.0 mm	1205.0 mm	1212.0 mm

Photometric data



LEDtube 600mm 8W /840, 1200mm 16W /840

