



## CSV-T

### Screw connector for Cu and Al

longitudinally sealed, with shear head bolts, with separator, for low voltage

Screw connector for RM/SM/RE/SE aluminium and copper conductors, suitable for straight-through and transition joints.

#### Material

- Aluminium tin-plated

#### Application/Suitability

- For connecting conductors class 1 and class 2 in compliance with DIN-EN / IEC 60228

#### Test standards

- IEC 61238-1

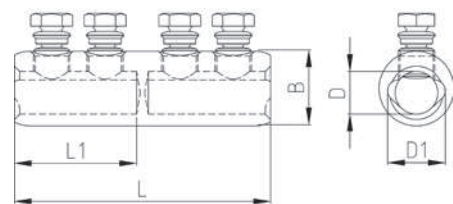


#### Scope of delivery

Screw connector, assembly instructions

Note: Cellpack counter-holder recommended for installation (see Accessories).

#### Dimensions



L = Length

L1 = Borehole depth

B = Width

D = Centric borehole

D1 = Outer diameter

Type		L mm	L1 mm	B mm	D mm	D1 mm	Number of bolts	Art.-No.
CSV-T	6-50	45	21	18	9.2	11.0	2	313462
	16-95	60	28	24	12.5	16.0	2	267685
	50-150	70	33	28	16.0	21.0	2	267708
	95-240	120	58	35	20.0	27.0	4	266811
	240-400	150	73	42	26.0	30.0	4	289677